

>> industrial space for lease

Baseline Foothills

4401-4405-4409 East Baseline Road, Phoenix, Arizona



professionally managed by:
Verve Commercial
Real Estate

- Available:** Suite 124 - 7,809 sf / 4,275 sf ofc
Suite 128 - 5,029 sf / 4,275 sf ofc
Suite 130 - 16,235 sf / 8,930 sf ofc
- Warehouse:** Evaporative cooled
- Clear Height:** 18 feet
- Parking:** 3:1000 covered parking available
- Zoning:** IP: Industrial Park, City of Phoenix
- Power:** 800 amps of power, 277/480, 3 phase

Location:

- Minutes from Sky Harbor International Airport
- 2 miles from Downtown Phoenix
- I-10 and Superstition freeway access

Features:

- Flex building part of 148,519 sf, three building project



for more information, please contact:

Jackie Orcutt
Associate
602.229.5960
jackie.orcutt@cushwake.com

Will Strong
Senior Associate
602.229.5909
will.strong@cushwake.com

Mark Detmer SIOR, CCIM
Executive Director
602.229.5971
mark.detmer@cushwake.com

2555 East Camelback Road
Suite 300
Phoenix, Arizona 85016

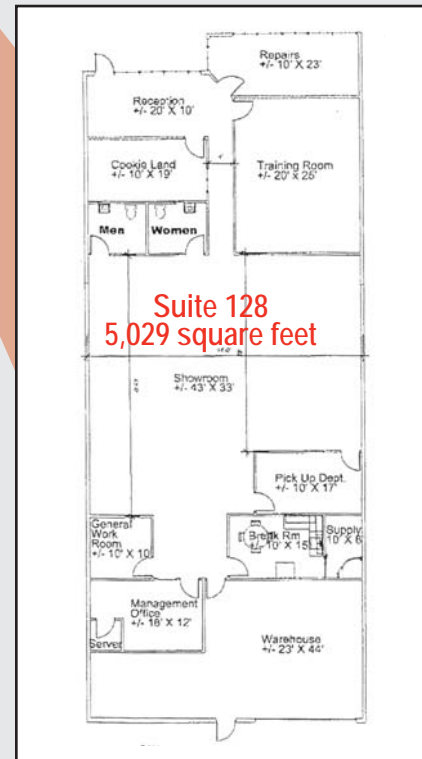
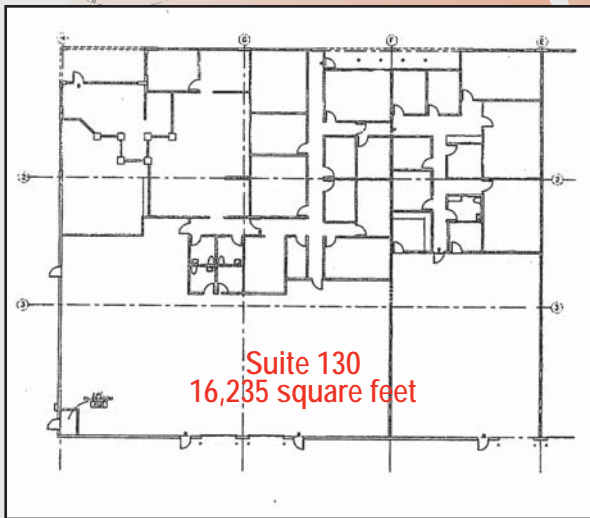
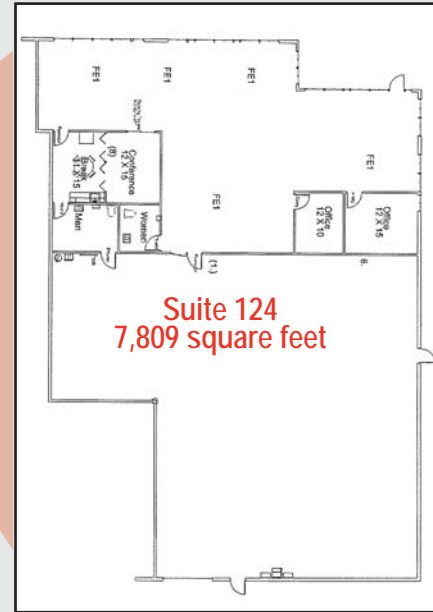
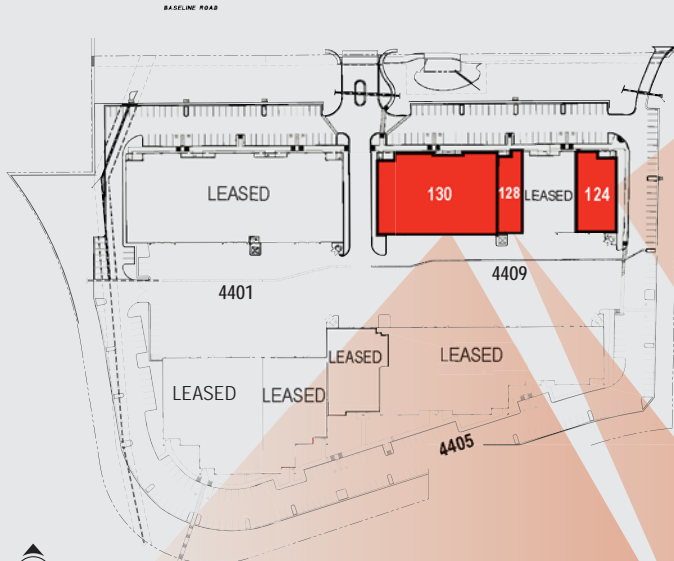




>> industrial space for lease

Baseline Foothills

4401-4405-4409 East Baseline Road, Phoenix, Arizona



professionally managed by:

**Verve Commercial
Real Estate**

Jackie Orcutt
Associate
602.229.5960
jackie.orcutt@cushwake.com

Will Strong
Senior Associate
602.229.5909
will.strong@cushwake.com

Mark Detmer, SIOR CCIM
Executive Director
602.229.5971
mark.detmer@cushwake.com

no warranty or representation, express or implied, is made as to the accuracy of the information contained herein, and same is submitted subject to errors, omissions, change of price, rental or other conditions, withdrawal without notice, and to any specific listing conditions, imposed by our principals.