

**SUNBURY, PENNSYLVANIA**

**For additional information regarding 215 Packer Street, please contact:**

**STEPHEN A. COOPER**

*Senior Director*

484-380-3040

steve.cooper@cushwake.com

**JEFFREY L. WILLIAMS**

*Director*

610-772-2003

jeff.williams@cushwake.com

**GERARD J. BLINEBURY, JR.**

*Senior Director*

215-963-4034

gerry.blinebury@cushwake.com

**Cushman & Wakefield of Pennsylvania, Inc.**

8 Tower Bridge • 161 Washington Street - Suite 1080 • Conshohocken, PA 19428

tel (610) 772-2000 • fax (610) 260-0804

No warranty or representation, express or implied, is made as to the accuracy of the information contained herein, and same is submitted subject to errors, omissions, change of price, rental or other conditions, withdrawal without notice, and to any special listing conditions, imposed by our principals.



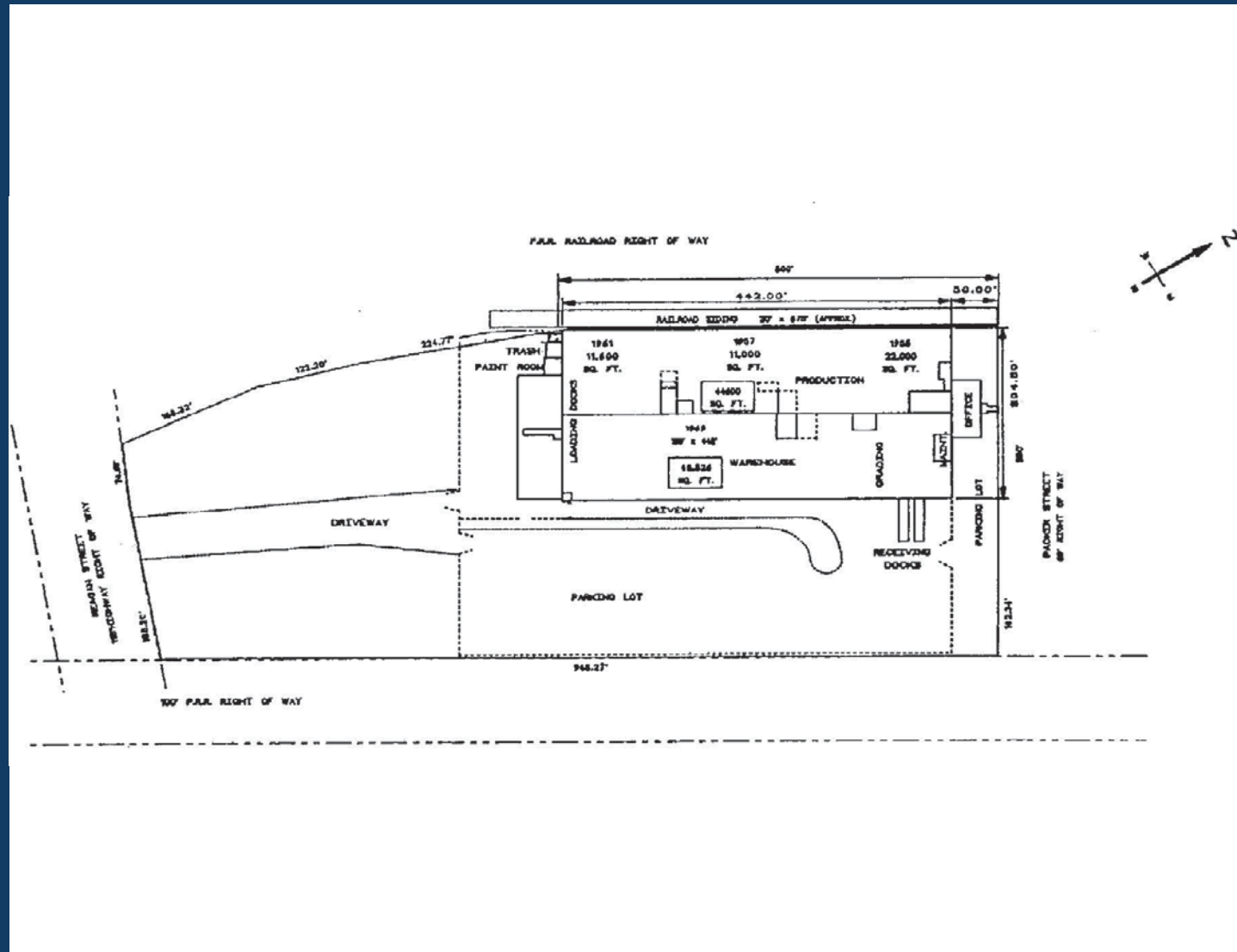
# 215 PACKER STREET INDUSTRIAL BUILDING

## LOCATION OVERVIEW

215 Packer Street is located conveniently in the Northern portion of the Central Pennsylvania Industrial Market. This location holds a strong position in the market with a superb local labor market as well as the convenience of access to interstate I-80. This submarket is home to many other significant manufacturing and distribution companies including the following:

Weis Markets Inc.  
Conagra Foods Packaged Foods  
Furmano Foods Inc.

Sara Lee Corp.  
Cherokee Pharmaceuticals Inc.  
Reinhart Foodservice LLC



## PROPERTY OVERVIEW

- 92,125 SF; 2,000 SF office
- 204' x 442' building dimensions
- 8.8 acres of land
- Located near I-80 and I-81
- Built between 1956-1969
- Zoned Industrial – Sunbury Borough Township

## BUILDING SPECIFICATIONS

- 16.1' ceiling heights
- Pressurized wet sprinkler system
- 34' x 22.1' column spacing
- Painted concrete block
- Twelve tailgate doors
- Rubber membrane roof
- Fluorescent light fixtures
- 20' x 20' explosion proof room
- Locker room with showers
- Natural gas fired electrical generator

## UTILITIES

- Gas: Natural gas
- Electric: 500 KvA 480 v/277; PP&L
- Water and sewer: Public (City of Sunbury)