

INDUSTRIAL SPACE FOR LEASE

# Normal Junction, Suite 104

1715 South Holbrook Lane, Suite 104, Tempe Arizona



### AVAILABLE SPACE

- 19,825 SF Total
- ±800 SF Office

### CLEAR HEIGHT

- 25' Minimum

### LOADING

- 1 Grade Level Ramp
- 2 Dock High Loading Positions

### FEATURES

- Partially Air Conditioned/Evap Cooled Warehouse
- 169' Building Depth
- 40' x 48' Bay Sizing
- Metal Halide & Strip Lighting
- Foil Insulation
- Sprinkler System



For more information, please contact:

**Jackie Orcutt**  
Associate  
602.229.5960  
jackie.orcutt@cushwake.com

**Will Strong**  
Senior Associate  
602.229.5909  
will.strong@cushwake.com

**Mark Detmer SIOR, CCIM**  
Executive Director  
602.229.5971  
mark.detmer@cushwake.com

2555 East Camelback Road  
Suite 300  
Phoenix, Arizona 85016

Telephone: (602) 253-7900  
Fax: (602) 253-0538

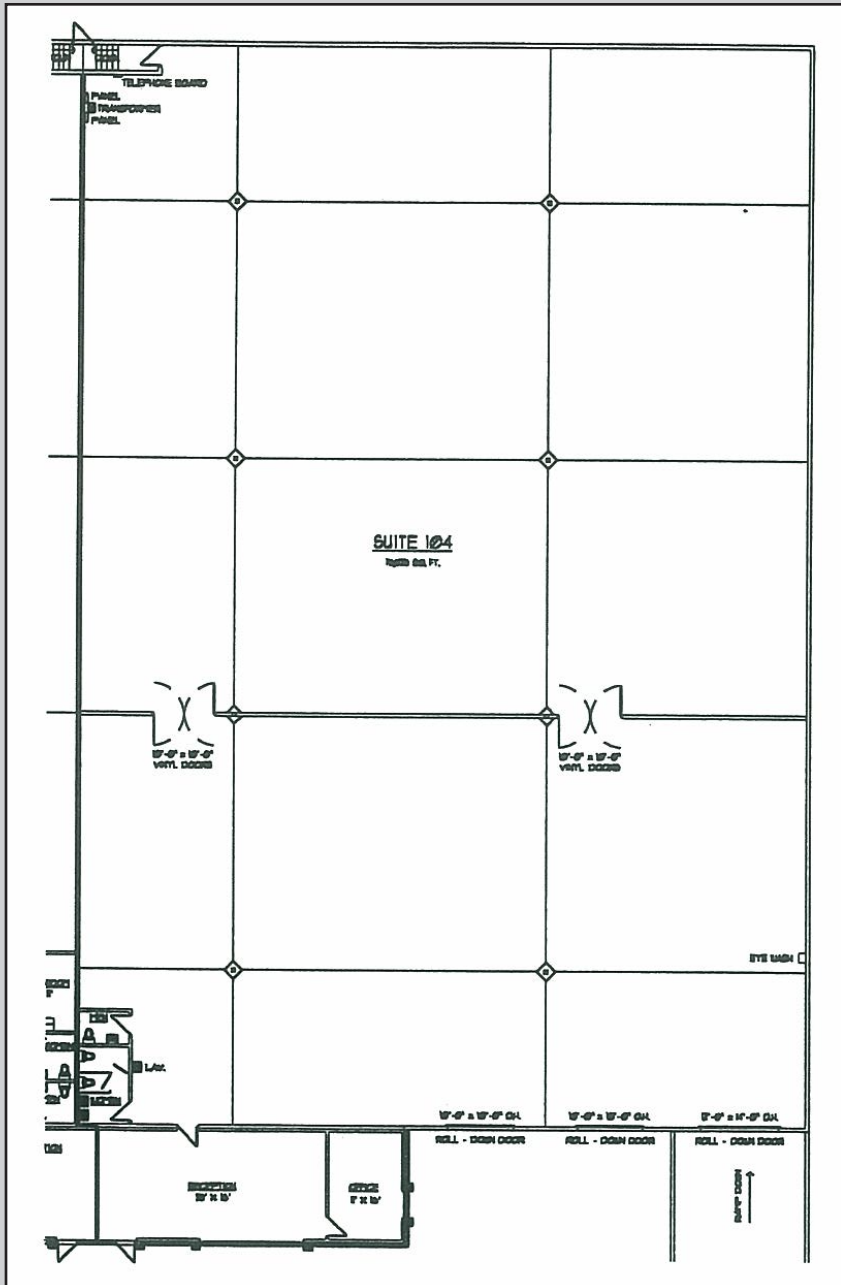




INDUSTRIAL SPACE FOR LEASE

# Normal Junction, Suite 104

1715 South Holbrook Lane, Suite 104, Tempe Arizona



For more information, please contact:

**Jackie Orcutt**  
 Associate  
 602.229.5960  
 jackie.orcutt@cushwake.com

**Will Strong**  
 Senior Associate  
 602.229.5909  
 will.strong@cushwake.com

**Mark Detmer SIOR, CCIM**  
 Executive Director  
 602.229.5971  
 mark.detmer@cushwake.com

© Copyright 2011 - Cushman & Wakefield Inc. - All rights reserved.  
 No warranty or representation, express or implied, is made as to the accuracy of the information contained herein, and same is submitted subject to errors omissions, change of price, rental or other conditions, withdrawal without notice, and to any specific listing conditions, imposed by our principals.

2555 East Camelback Road  
 Suite 300  
 Phoenix, Arizona 85016

Telephone: (602) 253-7900  
 Fax: (602) 253-0528

