



AVAILABLE FOR SALE OR LEASE

7910 - 8060 South Kyrene Road | Tempe, Arizona

OCOTILLO

BUSINESS CENTER

For more information, please contact:

JACKIE ORCUTT

Associate
602.229.5960
jackie.orcutt@cushwake.com

KYLE WESTFALL

Senior Associate
602.229.5859
kyle.westfall@cushwake.com

MARK DETMER SIOR, CCIM

Executive Director
602.229.5971
mark.detmer@cushwake.com

PAT HARLAN, MGR

Senior Director
602.229.5912
pat.harlan@cushwake.com

2555 East Camelback Road
Suite 300
Phoenix, Arizona 85016

Telephone: (602) 253-7900
Fax: (602) 253-0528

BUCHANAN STREET
PARTNERS

 **CUSHMAN & WAKEFIELD**
Global Real Estate SolutionsSM

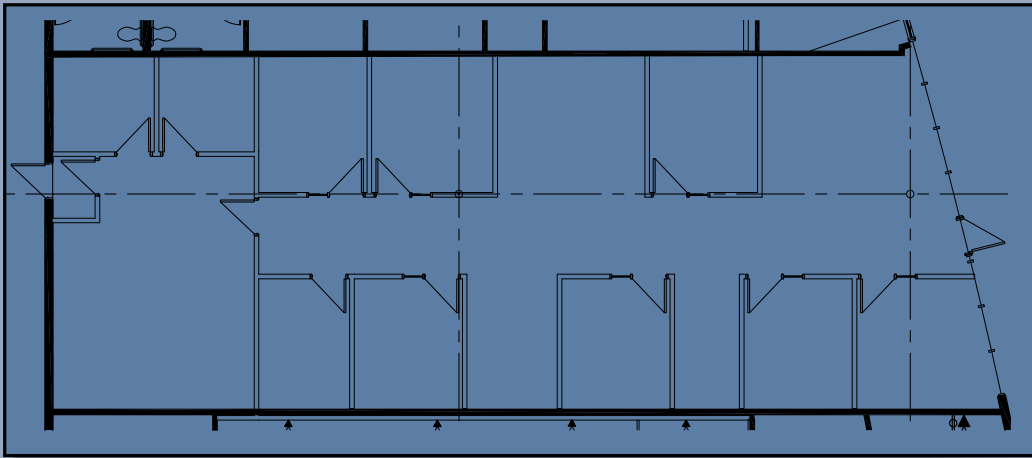
Ocotillo

Business Center

7910 - 8060 South Kyrene Road | Tempe, Arizona

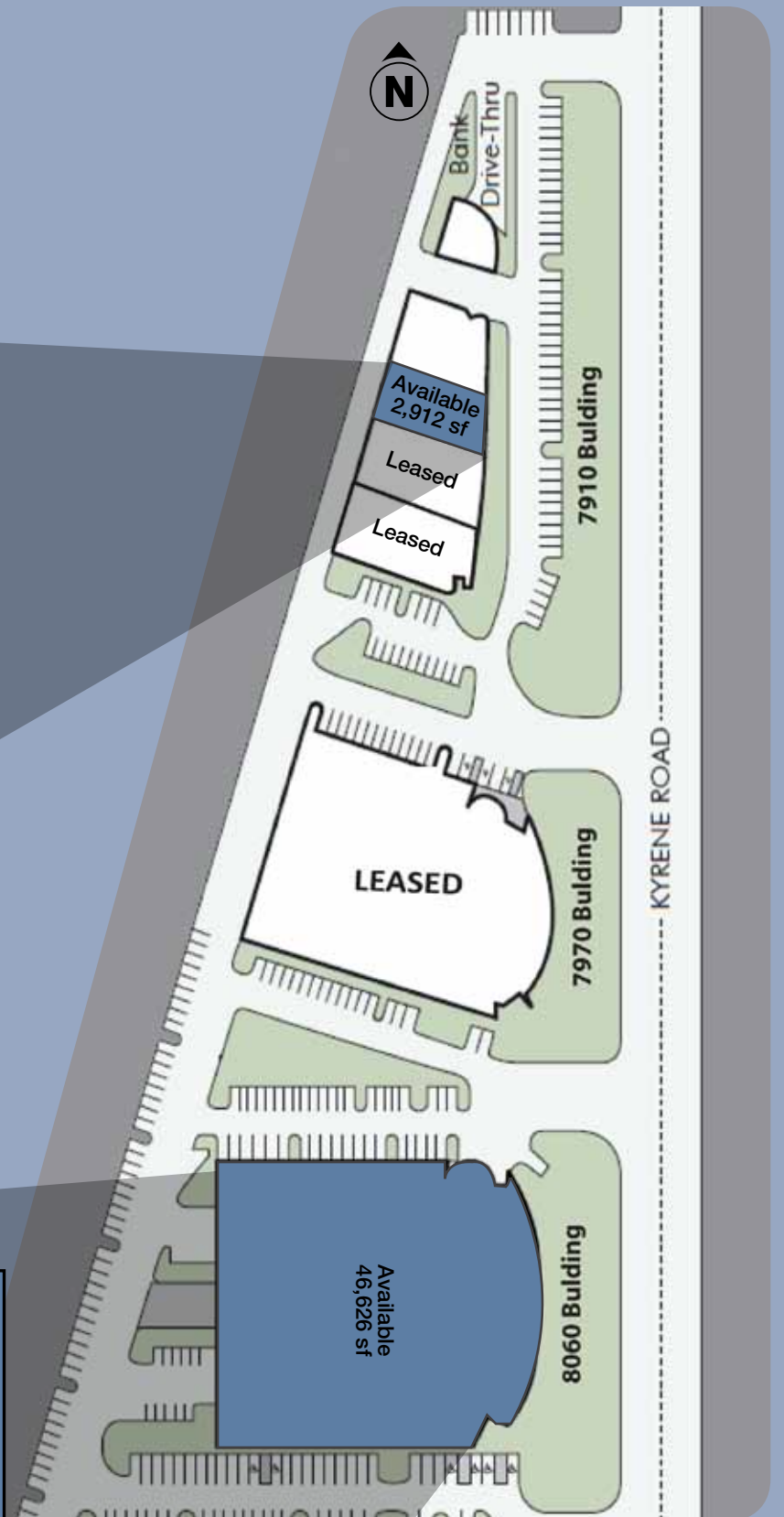
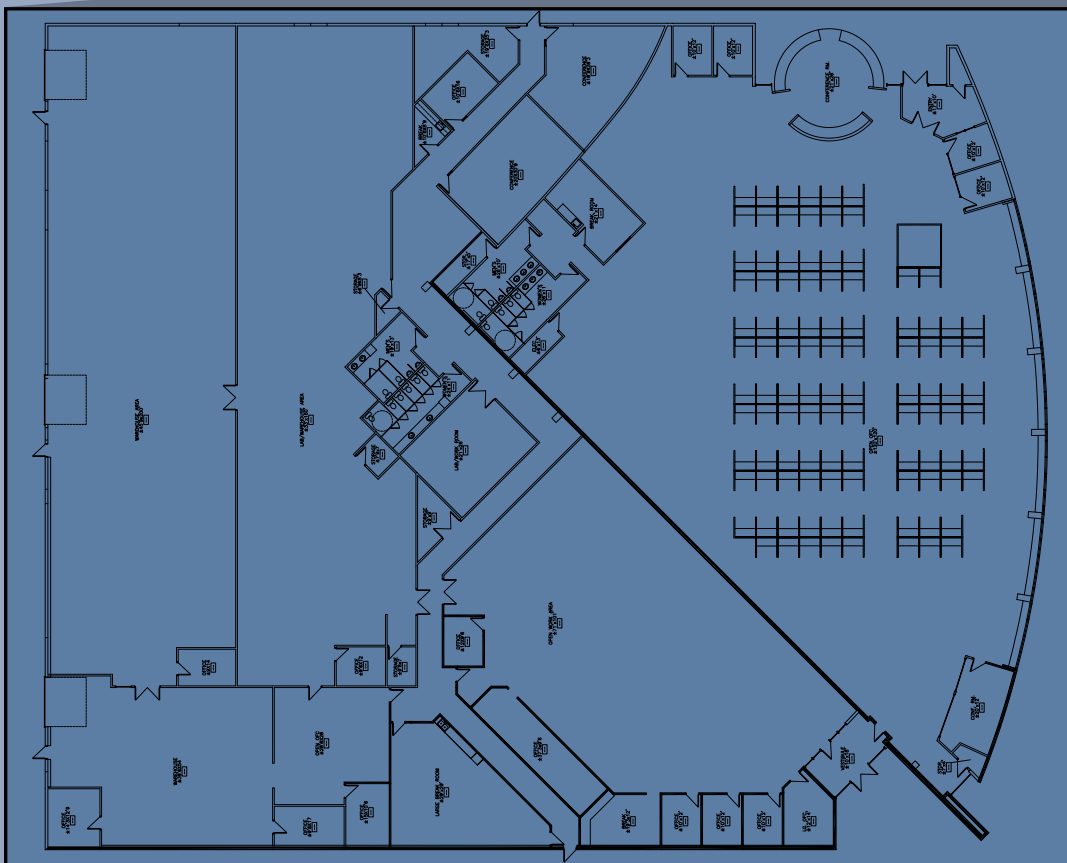
7910 BUILDING - SUITE 107 FEATURES

- For Lease
- Space square feet: ±2,912 sf
- 100% Office
- 1 man door
- 24' Clear Height
- High Image Glass
- Built: 1999
- Masonry Construction
- 277/480 volt
- I-1 Zoning, City of Tempe



8060 BUILDING FEATURES

- For Sale or Lease
- Total Square Feet: ±46,626 sf
- Office Square Feet: ±17,960 sf
- Divisible
- Kyrene Road Frontage
- 2 Grade Level Doors
- 2 Dock High Doors
- Fully Air Conditioned
- 24' Clear Height
- High Image Glass
- I-1 Zoning, City of Tempe
- Built: 1999
- 155 parking spaces



For more information, please contact:

JACKIE ORCUTT
Associate
602.229.5960
jackie.orcutt@cushwake.com

KYLE WESTFALL
Senior Associate
602.229.5859
kyle.westfall@cushwake.com

MARK DETMER SIOR, CCIM
Executive Director
602.229.5971
mark.detmer@cushwake.com

PAT HARLAN, MCR
Senior Director
602.229.5912
pat.harlan@cushwake.com

BUCHANAN STREET
PARTNERS

CUSHMAN & WAKEFIELD
Global Real Estate SolutionsSM

The depiction in the included photograph of any person, entity, sign, logo or property, other than Cushman & Wakefield's (C&W) client and the property offered by C&W, is incidental only, and is not intended to connote any affiliation, connection, association, sponsorship or approval by or between that which is incidentally depicted and C&W or its client. This listing shall not be deemed an offer to lease, sublease or sell such property, and, in the event of any transaction for such property, no commission shall be earned by or payable to any cooperating broker except if otherwise provided pursuant to the express terms, rates and conditions of C&W's agreement with its principal, if, as and when such commission (if any) is actually received from such principal. (A copy of the rates and conditions referred to above with respect to this property is available upon request.)

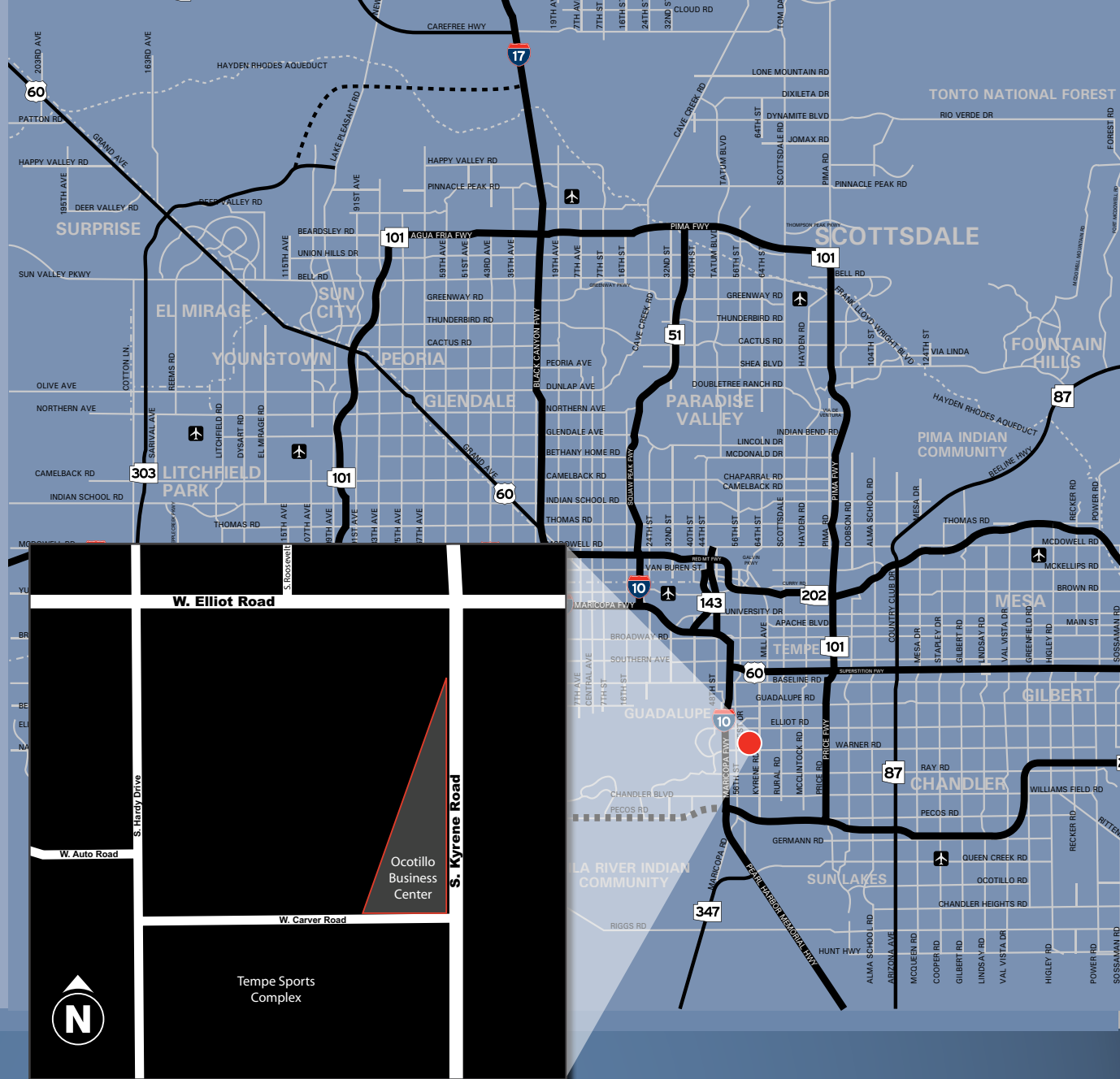
Ocotillo

Business Center

7910 - 8060 South Kyrene Road | Tempe, Arizona

AREA FEATURES:

- Numerous Retail Amenities Nearby on Elliot Road / Warner Road
- 1/2 Mile from I-10/Elliot Full Diamond Interchange
- 10 minutes to Arizona State University
- 10 minutes to Sky Harbor International Airport



For more information, please contact:

JACKIE ORCUTT

Associate
602.229.5960
jackie.orcutt@cushwake.com

KYLE WESTFALL

Senior Associate
602.229.5859
kyle.westfall@cushwake.com

MARK DETMER SIOR, CCIM

Executive Director
602.229.5971
mark.detmer@cushwake.com

PAT HARLAN, MCR

Senior Director
602.229.5912
pat.harlan@cushwake.com

BUCHANAN STREET
PARTNERS

CUSHMAN & WAKEFIELD
Global Real Estate SolutionsSM

The depiction in the included photograph of any person, entity, sign, logo or property, other than Cushman & Wakefield's (C&W) client and the property offered by C&W, is incidental only, and is not intended to connote any affiliation, connection, association, sponsorship or approval by or between that which is incidentally depicted and C&W or its client.

This listing shall not be deemed an offer to lease, sublease or sell such property; and, in the event of any transaction for such property, no commission shall be earned by or payable to any cooperating broker except if otherwise provided pursuant to the express terms, rates and conditions of C&W's agreement with its principal, if, as and when such commission (if any) is actually received from such principal. (A copy of the rates and conditions referred to above with respect to this property is available upon request.)