



**2120 South 7th Avenue**  
 • Suite 150: 6,319 sf

**2130 South 7th Avenue**  
 • Suite 150: 8,755 sf

# WHITE STAR CORPORATE CENTER

2110 - 2140 SOUTH 7TH AVENUE • PHOENIX ARIZONA

## SWC OF I-17 & 7TH AVENUE

Managed By:

**verve .**  
 Commercial Real Estate, LLC

For more information contact:

**JACKIE ORCUTT**

Associate  
 602.229.5960  
 jackie.orcutt@cushwake.com

**WILL STRONG**

Senior Associate  
 602.229.5909  
 will.strong@cushwake.com

**MARK DETMER, SIOR, CCIM**

Executive Director  
 602.229.5971  
 mark.detmer@cushwake.com

**BO MILLS, SIOR, CCIM**

Executive Director  
 602.229.5970  
 bo.mills@cushwake.com



# WHITE STAR CORPORATE CENTER

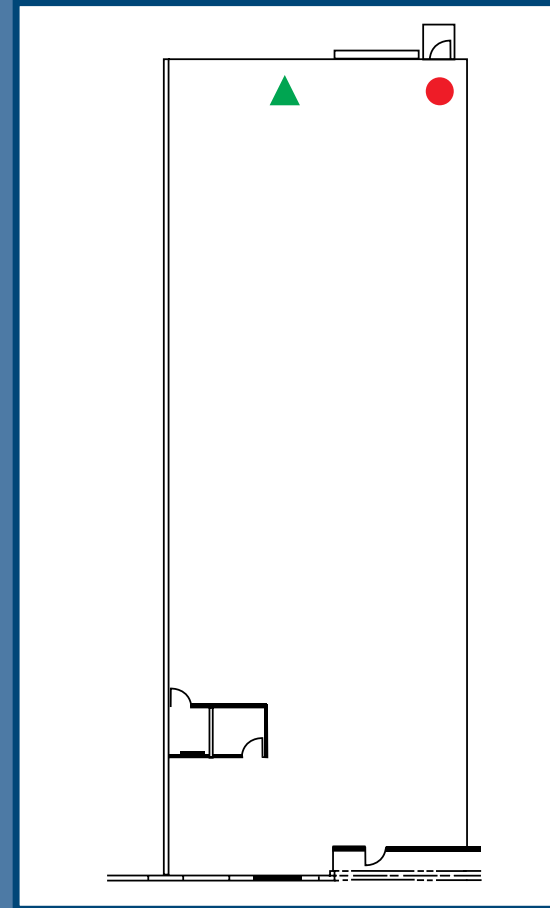
2110 - 2140 SOUTH 7TH AVENUE • PHOENIX ARIZONA



## 2120 South 7th Avenue

### Suite #150: 6,319 sf

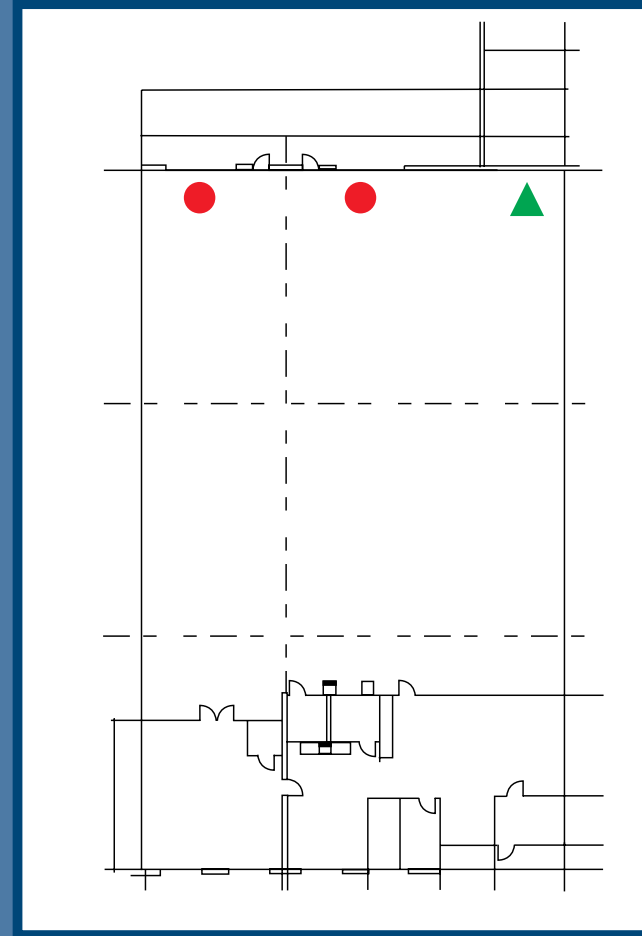
- Office Buildout to Suit
- 1 Restroom
- 1 Truckwell/ 1 Grade Level Door
- Evap Cooled Warehouse



# 2130 South 7th Avenue

## Suite #150: 8,755 sf

- Approximately 1,800 sf Office
- 1 Truckwell/ 2 Grade Level Doors
- Evap Cooled Warehouse
- Frontage on 7th Avenue



▲ = Truckwell  
● = Grade Level

The depiction in the above photograph of any person, entity, sign, logo or property (other than Cushman & Wakefield's client and the property offered by Cushman & Wakefield) is incidental only, and is not intended to connote any affiliation, connection, association, sponsorship or approval by or between that which is incidentally depicted and Cushman & Wakefield or its client.

This listing shall not be deemed an offer to lease, sublease or sell such property, and, in the event of any transaction for such property, no commission shall be earned by or payable to any cooperating broker except if otherwise provided pursuant to the express terms, rates and conditions of C&W's agreement with its principal, if, as and when such commission (if any) is actually received from such principal. (A copy of the rates and conditions referred to above with respect to this property is available upon request.)

Managed By:

**verve.**

Commercial Real Estate, LLC

For more information contact:

**JACKIE ORCUTT**

Associate

602.229.5960

jackie.orcutt@cushwake.com

**WILL STRONG**

Senior Associate

602.229.5909

will.strong@cushwake.com

**MARK DETMER, SIOR, CCIM**

Executive Director

602.229.5971

mark.detmer@cushwake.com

**BO MILLS, SIOR, CCIM**

Executive Director

602.229.5970

bo.mills@cushwake.com



# WHITE STAR CORPORATE CENTER

2110 - 2140 SOUTH 7TH AVENUE • PHOENIX ARIZONA



## PROPERTY FEATURES

- Built in 2002
- 24' Clear Height
- A-2 Zoning
- Secured Yard / Outside Storage Option
- Truckwell / Grade Level Loading
- Freeway Exposure
- Located in Phoenix Enterprise Zone
- 2,000 Amps, 277/480 volt, 3 Phase per building



For more information contact:

### JACKIE ORCUTT

Associate  
602.229.5960  
jackie.orcutt@cushwake.com

### WILL STRONG

Senior Associate  
602.229.5909  
will.strong@cushwake.com

### MARK DETMER, SIOR, CCIM

Executive Director  
602.229.5971  
mark.detmer@cushwake.com

### BO MILLS, SIOR, CCIM

Executive Director  
602.229.5970  
bo.mills@cushwake.com

The depiction in the above photograph of any person, entity, sign, logo or property (other than Cushman & Wakefield's client and the property offered by Cushman & Wakefield) is incidental only, and is not intended to connote any affiliation, connection, association, sponsorship or approval by or between that which is incidentally depicted and Cushman & Wakefield or its client.

This listing shall not be deemed an offer to lease, sublease or sell such property; and, in the event of any transaction for such property, no commission shall be earned by or payable to any cooperating broker except if otherwise provided pursuant to the express terms, rates and conditions of C&W's agreement with its principal, if, as and when such commission (if any) is actually received from such principal. (A copy of the rates and conditions referred to above with respect to this property is available upon request.)