

Share Report Abuse Next Blog»

Create Blog Sign In

SPRINGFIELD VERMONT NEWS

CAST YOUR VOTE NOW FOR REPUBLICAN PRESIDENTIAL CANDIDATE - [CLICK HERE](#)

TUESDAY, DECEMBER 13, 2011

Jeld-Wen here for the long term

The window and door maker extends lease at Winstanley Property in North Springfield.

Cushman & Wakefield Orchestrates 212,340-Square-Foot Lease Renewal for JELD-WEN

The Window and Door Maker Extends Lease at Winstanley Property in Vermont

36 Precision Drive, North Springfield, VT

PRLog (Press Release) - Dec 13, 2011 -

NORTH SPRINGFIELD, Vt., – JELD-WEN, Inc. has signed a long-term lease renewal for 212,340 square feet of industrial space at 36 Precision Drive in North Springfield, Vt., announced Cushman & Wakefield. A global window and door maker based in Klamath Falls, Ore., JELD-WEN utilizes the site for product manufacturing for the New England region.

In the transaction, the company was represented by Bo Mills, Mark Detmer, Will Strong, and Jackie Orcutt of the Phoenix office of Cushman & Wakefield, and Thomas Farrelly of the firm's Manchester, N.H. office. Landlord WE 36 Precision Drive LLC, an affiliate of Winstanley Enterprises, was represented by Arthur Ross of Hart Corp.

"With its prime location near I-91, this facility is well-suited for JELD-WEN for serving its regional market," said Mills. "Recently renovated, this industrial property works well for the company's window and door business."

Originally constructed in 1968 as a single-tenant precision tool manufacturing facility, 36 Precision Drive was completely renovated in 2006 and converted into a multi-tenant property. The building totals 373,000 square feet, expandable to 600,000 square feet, and occupies 15 acres within a 213-acre industrial tract.

Cushman & Wakefield, Inc.'s industrial brokerage platform provides global resources for tenant and landlord representation, disposition and acquisition services, transaction management, and industrial consulting including labor and demographic analysis. In 2010, this group completed

Click on any headline to get the complete story.

SEARCH SPRINGFIELD NEWS:

Tip: Try just a one word search first to get the most results.

[Vermont Today](#)

[Calendar of Events](#)

[Classifieds](#)

[Obituaries](#)

[Springfield VT Home Page](#)

Local websites, visitors guide, history, directory of town services and more.

[Springfield VT History](#)

EMERGENCY TOWN MEETING BRATTLEBORO

FRIDAY 06V-07H 2012 7 PM
ROCKETS OUTRIGGER THEATRE
111 MAIN ST. 802 253 1276

This winter CYPH plans to begin installation of wireless smart meters in ALL homes, businesses and public buildings in Brattleboro area as part of the statewide smart grid project. These devices allow utilities to market your data, raising privacy and security issues. They emit pulsed radiofrequency radiation that is harmful to human health. You can keep your existing analog meter by opting out of the system.

Should you OPT-OUT?

Stopwatches.org graciously presents "The Biological Effects of Electromagnetic Fields," a talk by Cassella Ryan, M.Ed. Cassella Ryan is a leading activist in Brattleboro in the safety of electromagnetic fields and health. She founded www.ElectromagneticHealth.org, as well as the Campaign for Radiation Free Schools and the 1000 Why Why? What is it? Brattleboro, VT! Localities - Vermont Public Health 101. The National Institute of Environmental Health Sciences' (NIEHS) research on health and environmental problems. Her articles and booklets report, "Cellular and Brain Effects of Electromagnetic Radiation," which has been translated into Chinese, Spanish, and Russian. She is also a member of the International Commission on Radiological Protection (ICRP) and the International Commission on Non-Ionizing Radiation Protection (ICNIRP).

Would you like to know more? Join stopwatches.org on Facebook and visit www.stopwatches.org

more than 4,800 industrial real estate transactions nationwide - totaling 141.6 million square feet in leases and 52.9 million square feet in sales - with an aggregate value of nearly \$5 billion. This represented a year-over-year revenue increase of 26.7 percent.

Source: PRLog.org

 LABELS: [BUSINESS NEWS](#)

1 COMMENTS:

Anonymous said...

YEAH

12/14/11 8:23 AM

POST A COMMENT

Comment as:

NEWS ARCHIVE

- ▶ [2012](#) (4)
- ▼ [2011](#) (533)
 - [December](#) (36)
 - [November](#) (34)
 - [October](#) (33)
 - [September](#) (41)
 - [August](#) (45)
 - [July](#) (35)
 - [June](#) (52)
 - [May](#) (54)
 - [April](#) (50)
 - [March](#) (67)
 - [February](#) (41)
 - [January](#) (45)
- ▶ [2010](#) (549)
- ▶ [2009](#) (601)
- ▶ [2008](#) (281)
- ▶ [2007](#) (42)
- ▶ [2006](#) (3)
- ▶ [2005](#) (1)
- ▶ [2001](#) (2)

[Newer Post](#)

[Home](#)

[Older Post](#)

Subscribe to: [Post Comments \(Atom\)](#)

RECENT COMMENTS

[Anonymous](#) commented on [stagecoach mural proposed for handy](#): *Oh great ideas everyone. Buy another bag of Doritos - cook up a hot steaming pot of Beefaroni, sit...*

[Anonymous](#) commented on [stagecoach mural proposed for handy](#): *Giving the kindergarten classes cans of spray paint and telling them have fun, would be better than...*

Anonymous commented on [stagecoach mural proposed for handy](#): *So, you think that stage coaches are a better idea then something about Springfields heritage? I...*

Anonymous commented on [stagecoach mural proposed for handy](#): *To the well qualified nominator of "village idiot" candidates, please don't forget to...*

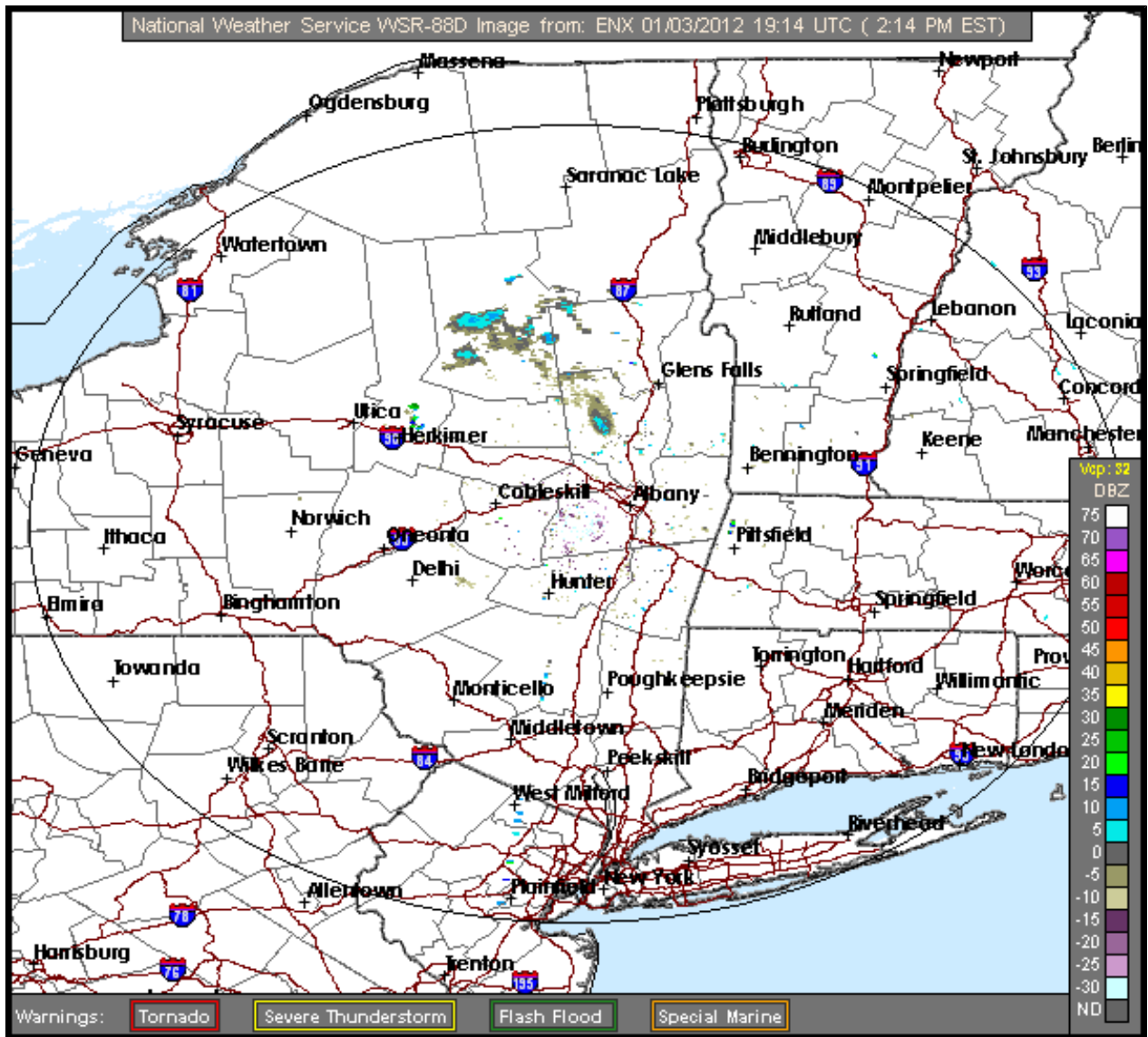
Anonymous commented on [stagecoach mural proposed for handy](#): *I actually agree with "your next selectman" Why stage coaches? How about something...*

[Smart Meters Raise Privacy, Health Concerns in Vt.](#)

Springfield Vermont News is an ongoing not-for-profit local news gathering project operating purely as a public service. Please consider sharing a link to this site with others you know interested in keeping up with what's happening in Springfield, VT. [Email the Editor at ed44vt@gmail.com](mailto:ed44vt@gmail.com)

[Weather Forecast](#) | [Weather Maps](#) | [Weather Radar](#) | [Hurricane Center](#)

[AccuWeather.com](#)[®]



SPRINGFIELD VERMONT NEWSPAPER

Springfield Reporter

Continuing a Century-Old Hometown Tradition December 28, 2011 • Vol. 37 No. 52 • 50¢

FAMILIAR FACES



Gil Whittemore

By Donna Cummings

You may have seen Gil Whittemore out walking the dog, but not always the same dog. Gil Whittemore decided about 10 years ago to adopt a rescue dog, then wondered if there might be some way he could help out and now spends three days a week walking dogs at the Springfield Humane Society Shelter.

"My wife got a dog through a Greyhound adoption program and we were looking for a companion dog," he says. "We decided to go through the Shelter and while I was there I wondered if there was something I could do to help out a little. That was right around the time of the Iraq war, so I'd say it was about 10 years ago. They said it would help to have someone who would walk dogs, so I decided to volunteer. Now I go up there Monday, Wednesday and Friday and go to walk every dog there for at least a little while."

Gil moved to Perkinsville with his family of six siblings when he was six years old. One still lives in Springfield and his mother is still nearby in Perkinsville. He attended schools in Perkinsville and graduated from Springfield High School in 1968. Then he went to Harvard, living in Cambridge for about 30 years and earning his PhD in History/Science. He worked part time as a teacher and did legal work part time. In 2000 he and his wife, Aratta Benfield, built their home on family property in Perkinsville and came back to Vermont full-time. He still works out of the Boston, MA office of Rath, Young & Fagnelli, doing most of his work in business law online.

"The Internet allows one a feasible way to make a living in Vermont," he smiles. "Life is different here than in the city. There a person goes to a job, and entertainment costs money. Here everyone seems to wear several hats and there is more variety in ways to productively fill time. It is a slower pace of life, but it seems like everyone has a project of some kind that keeps them busy. I'm not sure if it's noticeable when only making visits to the area from time to time, but after living here all the time, it sort of creeps up on you and then you realize it's comfortable."

Living in Vermont full-time has also revived Gil's interest in nature and forestry. "When we built our home we put a lot of effort into protecting and creating an orchard of sorts," he says. "Over the

Continued on Page 14



Tom Kendall's Eagle Scout Project Benefits Parent Child Center

Tom Kendall with some helpers (below) and with chair builder Dave Kinman (right)

Following family tradition, eighteen year old Tom Kendall of Springfield this fall completed the requirements for his Eagle Scout service project. The recipient of this project was the Springfield Area Parent Child Center in North Springfield. Originally planned as a mature trail along the

Continued on Page 8



Concerned Residents Bring Drug Abuse, Other Learning Impediment Issues to the School Board

By Donna Cummings

For several months a group of Springfield residents have been meeting to discuss concerns of drug, alcohol and gang activity in town. Last week they met with the Springfield School Board and district administrators at a special meeting to relay their concerns, discuss the needs of both the community and the schools and explore resources and options for correcting the problems faced by youth in the community.

Wanda Gorman from Springfield Restorative Justice and an organizer of the community forums opened the meeting by pointing out the concerns. "Lack of funding for programs, loss of the Student Assistance position at Springfield High School and no Resource Officer as well as all concern faced by local res-

idents," she said. "We all know we can't be dependent on the funds we have, so we need to look for other sources to meet these needs. By keeping open communication between the community, businesses and the schools, we can hope to combine existing resources."

The list of concerns was extensive, from both sides of the community and from school district personnel. Loss of services to students due to loss of grant funding options; altered perception of what is happening in the schools being reflective of a direct lack of community involvement in the schools; social issues should be addressed in the home; a need for more parental involvement in education; what kind of help

Continued on Page 7

PICTURE THE PAST - PAGE 2
POLICE REPORT - PAGE 3 • LETTERS - PAGE 5
MEANDERS - PAGE 6 • OBITUARIES - PAGE 15

